

# STEEL

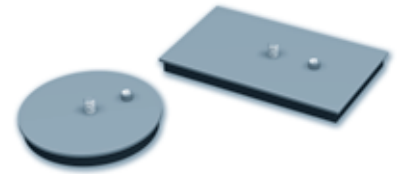
## Steel Suction Cups with Bonded Seal With Bonded Seal

For horizontal handling of heavy loads (very thick sheet metal) or objects with an uneven surface such as concrete slabs or wood, etc.

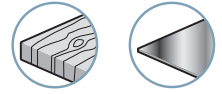
Advantage: wide selection of shapes and sizes.

### Materials

**Body** Painted steel  
**Foam seal** Nitrile



Industry-specific applications



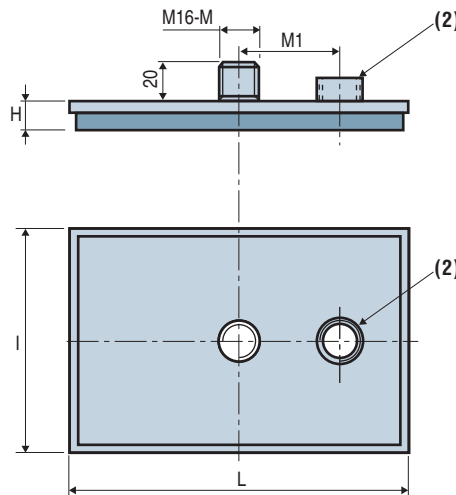
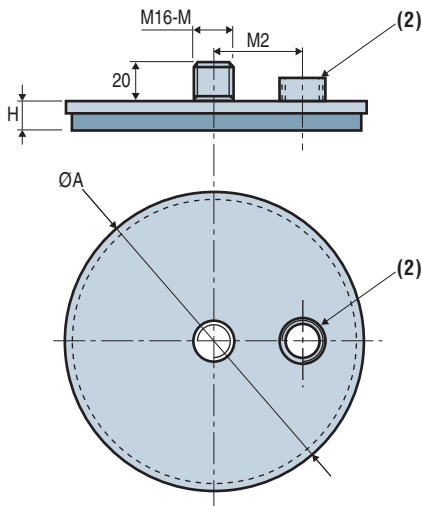
Types of use



### Suction Cup Characteristics

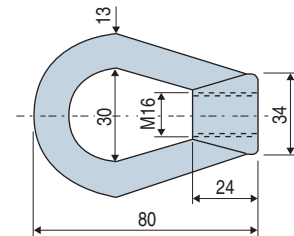
Round suction cups				Rectangular suction cups								
	Ø A	H	(lbf) <sup>(1)</sup>		L	I	H	M1/M2	Rac. <sup>(2)</sup>	(lbf) <sup>(1)</sup>	Type of seal	
<b>5020</b>	150	25	70	<b>6020</b>	175	115	25	40	G1/4"-F	75	BM 2020 SPTR	
<b>5028</b>	170	25	97	<b>6028</b>	215	115	25	45	G1/4"-F	96	BM 2020 SPTR	
<b>5035</b>	190	25	128	<b>6035</b>	225	125	25	50	G1/4"-F	115	BM 2020 SPTR	
<b>5050</b>	210	25	166	<b>6050</b>	250	150	25	60	G1/4"-F	169	BM 2020 SPTR	
<b>5085</b>	260	25	278	<b>6085</b>	305	180	25	70	G1/4"-F	271	BM 2020 SPTR	
<b>5150</b>	350	35	482	<b>6150</b>	410	250	35	80	G3/8"-F	485	BM 3030 SPTR	
<b>5240</b>	420	35	744	<b>6240</b>	480	310	35	100	G3/8"-F	768	BM 3030 SPTR	
<b>5330</b>	500	35	1111	<b>6330</b>	575	330	35	120	G3/8"-F	1016	BM 3030 SPTR	
<b>5500</b>	580	35	1550	<b>6500</b>	705	385	35	140	G3/8"-F	1531	BM 3030 SPTR	

(1) Force measured at 65% vacuum including a factor of 2.

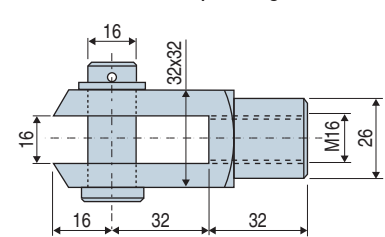


### Fittings

#### ■ 5000 An ring fitting



#### ■ 5000 Ch cap fitting



The values represent the average characteristics of our products.  
Note: All dimensions are in mm



**For all orders, please specify:**  
**Round suction cup: Model + Fitting model.**  
E.g.: 5050 5000 An

### Option

Spring system mounting, see page 4/5.